

PASSIVE SCHOOLS IN UKRAINE

*School #82
Oleksandr Firsov
10th Form*

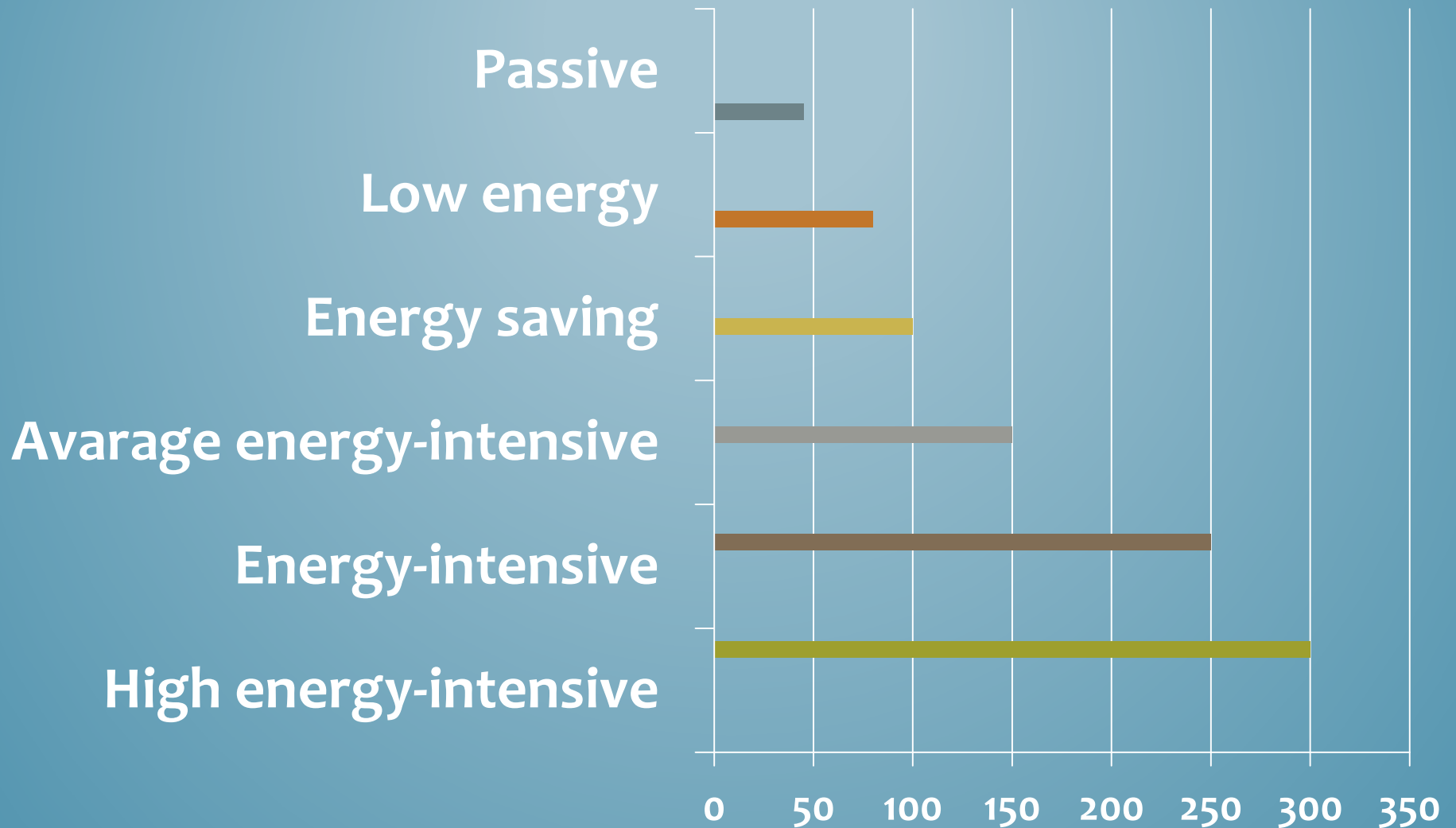
Passive house



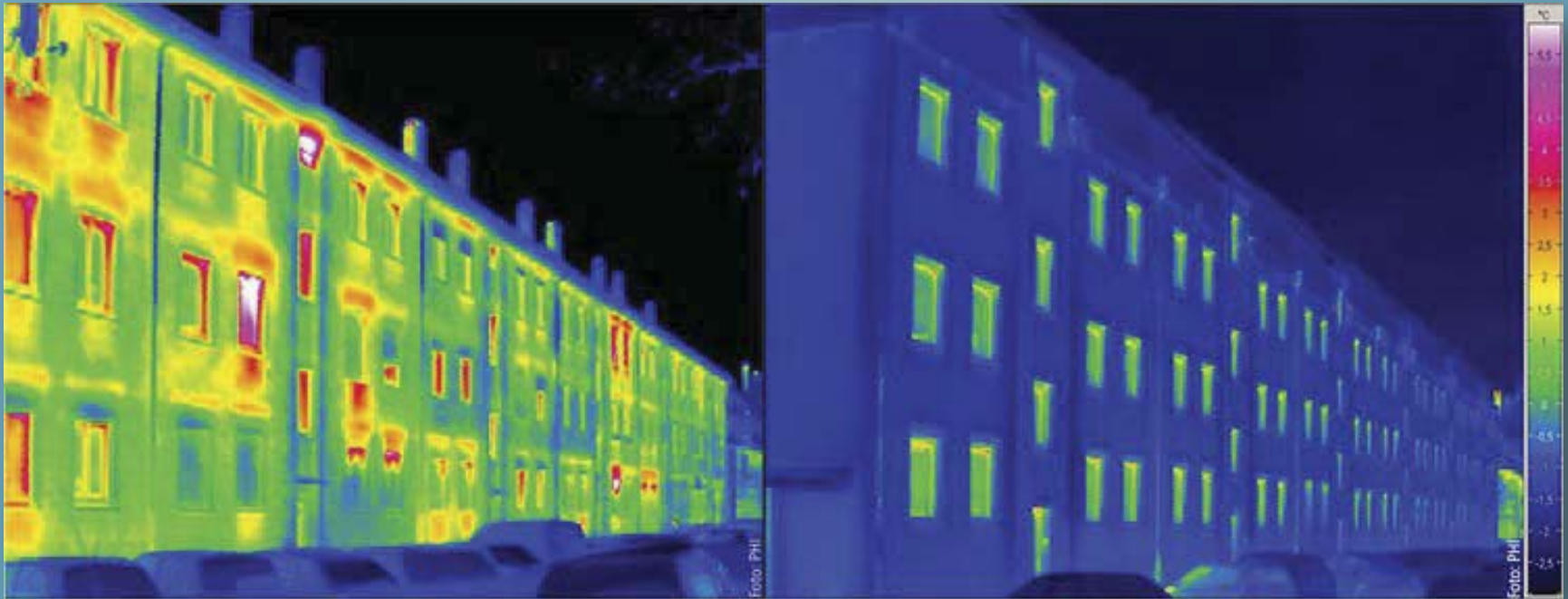
Energy saving and energy efficiency



BUILDING HEATING EXPENDITURES, [KW·HOUR/(M2 PER YEAR)]

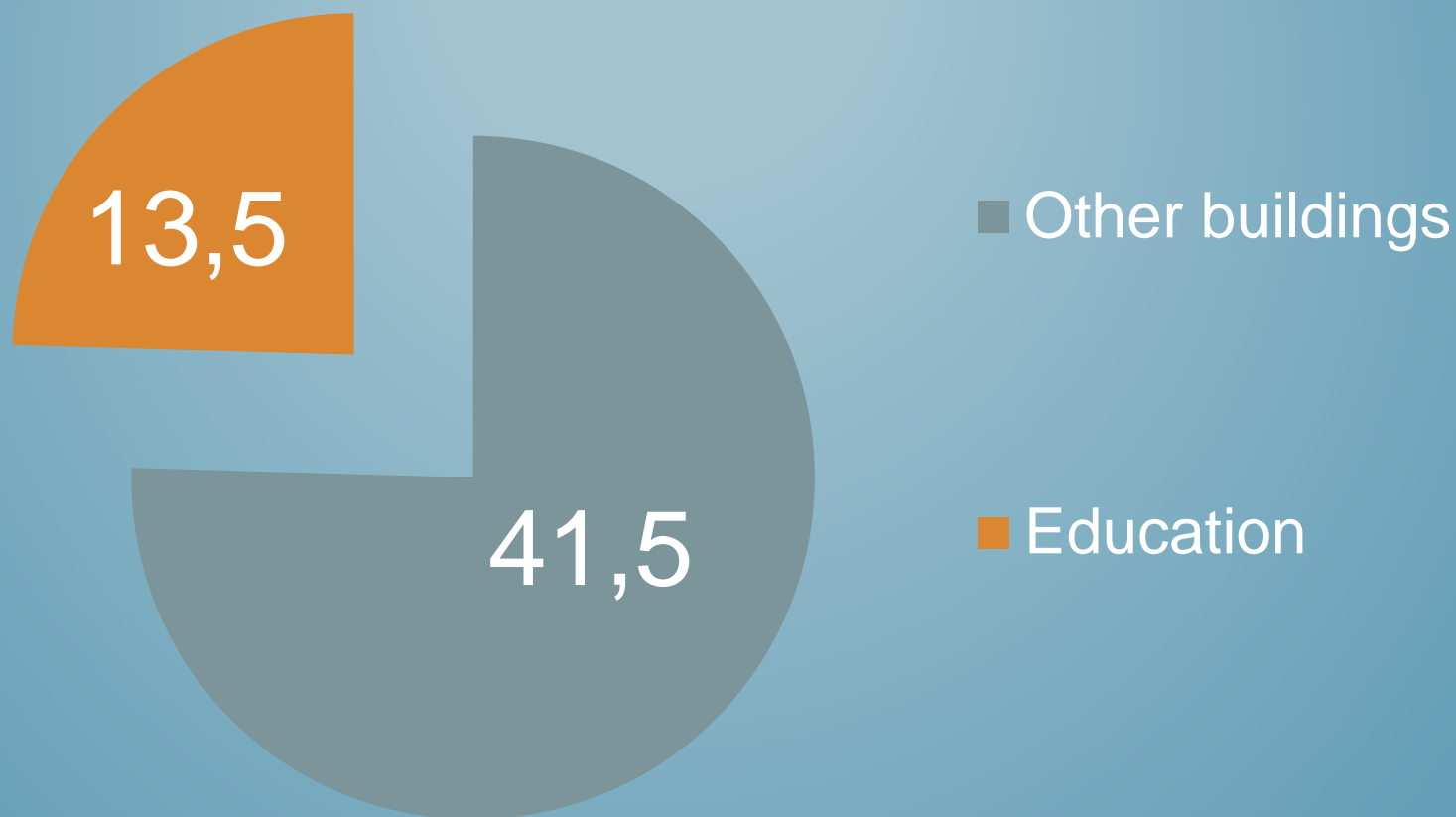


After applying passive house standard energy consumption decreases by 90% in old buildings and by 75 in new.



Thermography of building before(left) and after(right) renovation – energy consumption 290 and 18 kW/m².

Energy consumption, mln Wτ·hour per year.



How much does it cost?



Normal
School

=



Passive
School



Secondary school in Alsfeld, Germany



Bushbury Primary School, UK



<http://www.passipedia.org>

Secondary school near Munich, Germany

Who can provide it?



THANK YOU FOR ATTENTION!